

**Encoder Connector Pinning**

Pin	Function
4	+5V
5, 12	GND
6	COS-
7	SIN-
8	IDX-
13	COS+
14	SIN+
15	IDX+
1, 2, 3, 9, 10, 11	Not Connected

**Motor cable pinning**

Wire	Function
Wire 3	Motor Phase 3
Wire 2	Motor phase 2
Wire 1	Motor phase 1
Gr-Ye	Protective Earth

Variant	Part n°	Winding	L	Tol.
ASME-RTMBi1401003RAS0000	1235113-01	3RAS	5000	±100
ASME-RTMBi1401003RBS0000	1235113-02	3RBS	5000	±100

1235113-01 ID number

Change No. C142285-45  
Released: 09.05.2022

ASME-RTMBi1401003\*\*S0000 - Interface  
ASME-RTMBi1401003\*\*S0000 - Interface

Material: Matière:

Original drawing Scale Format  
RoHS 1:1 A1

Dimensions in mm / Cotes en mm

Workpiece edges ISO 13715  
Arêtes de formes selon ISO 13715

General tolerances ISO 2768-mK  
Tolérances générales ISO 2768-mK

Surfaces as per ISO 1302  
Etats de surface selon ISO 1302

Tolerances as per ISO 8015 : 2011  
Tolérances selon ISO 8015 : 2011

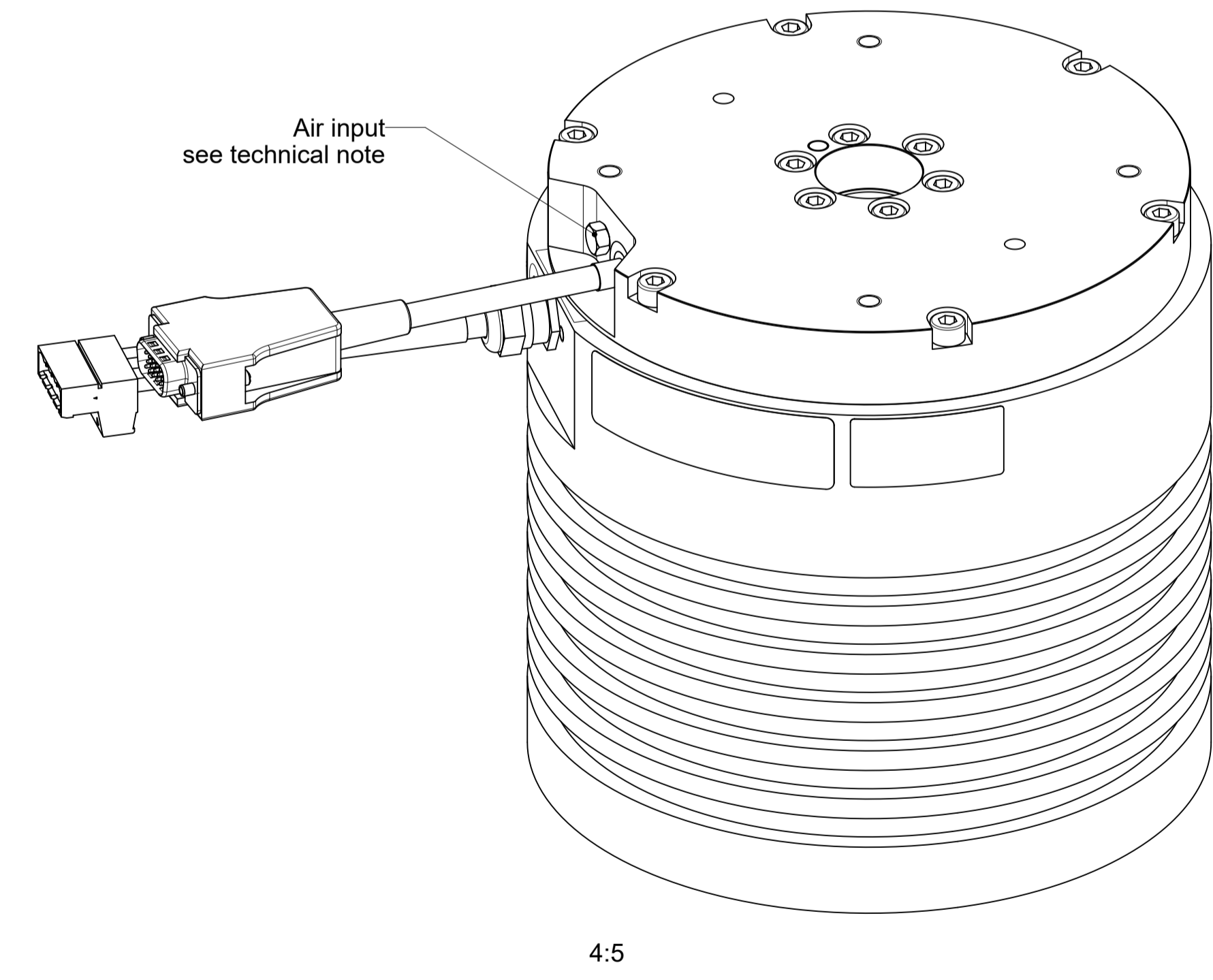
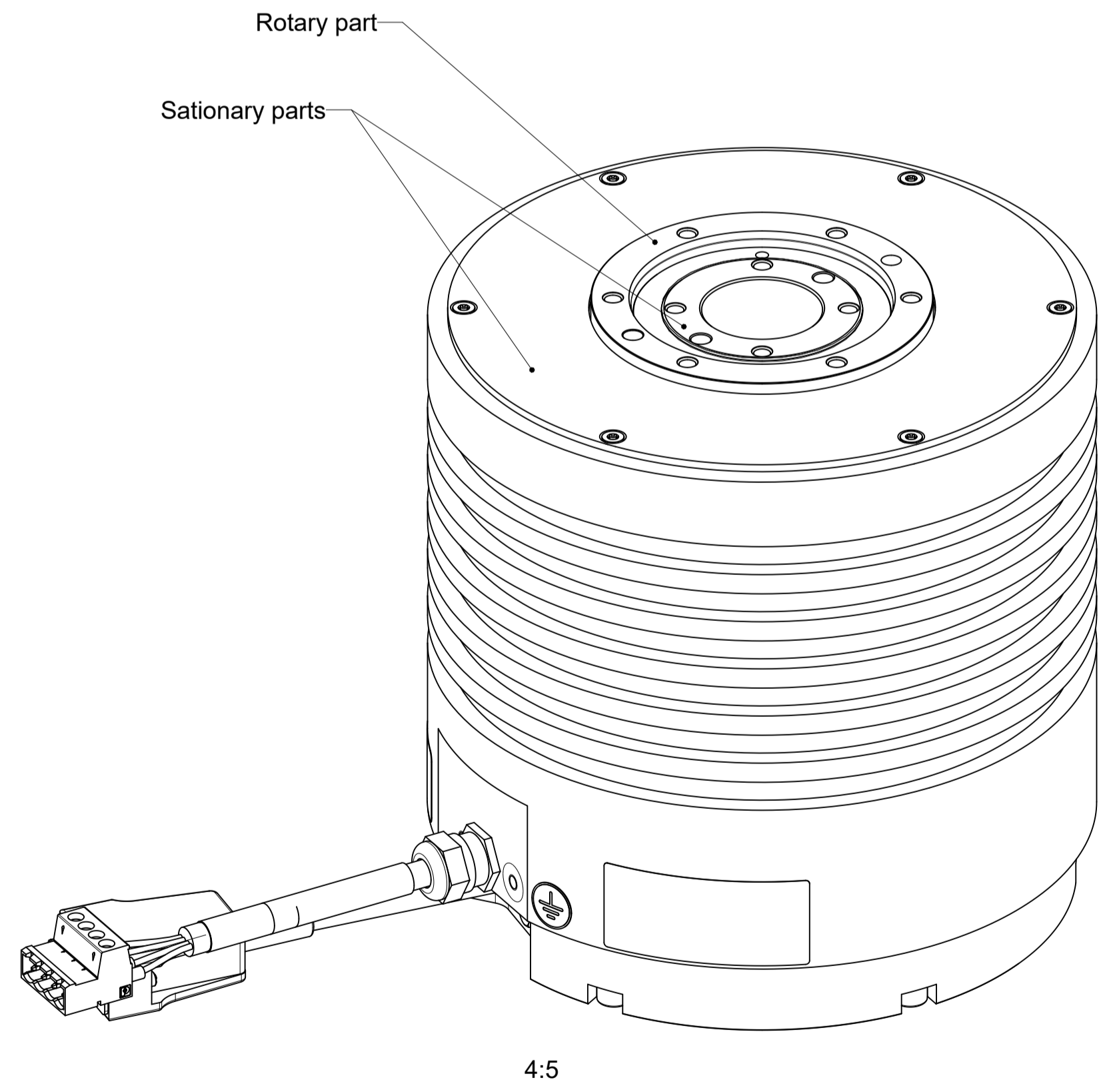
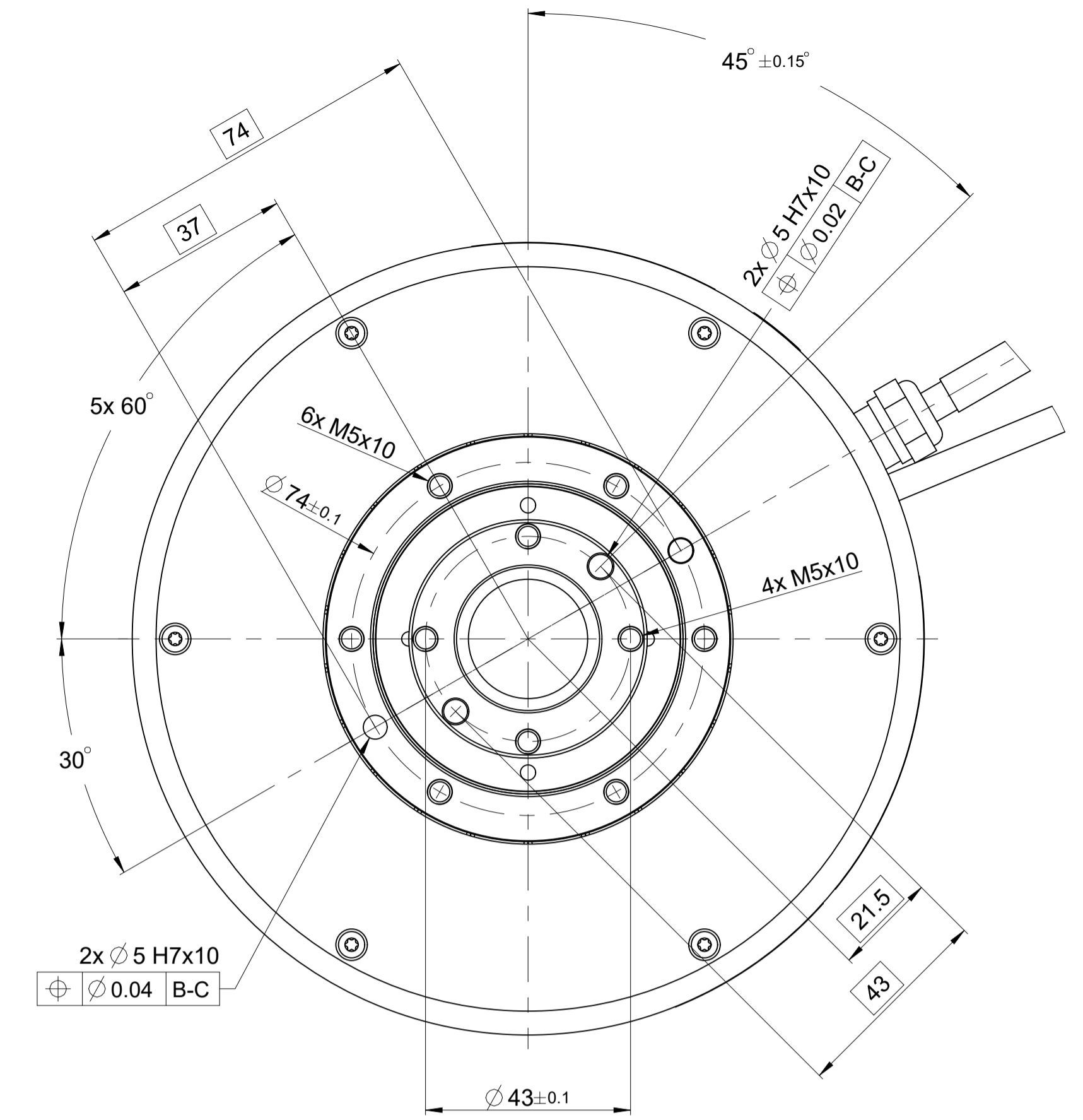
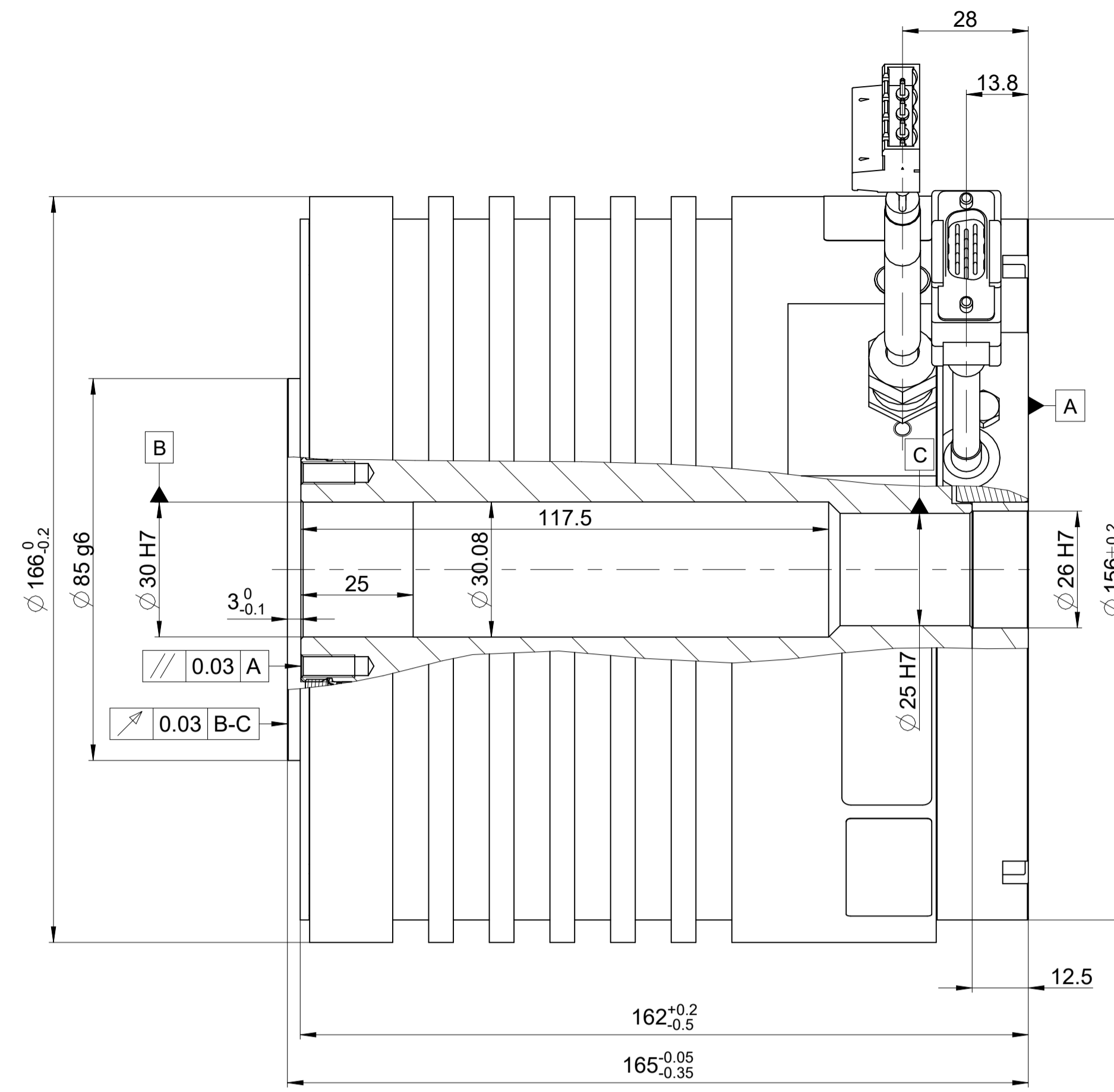
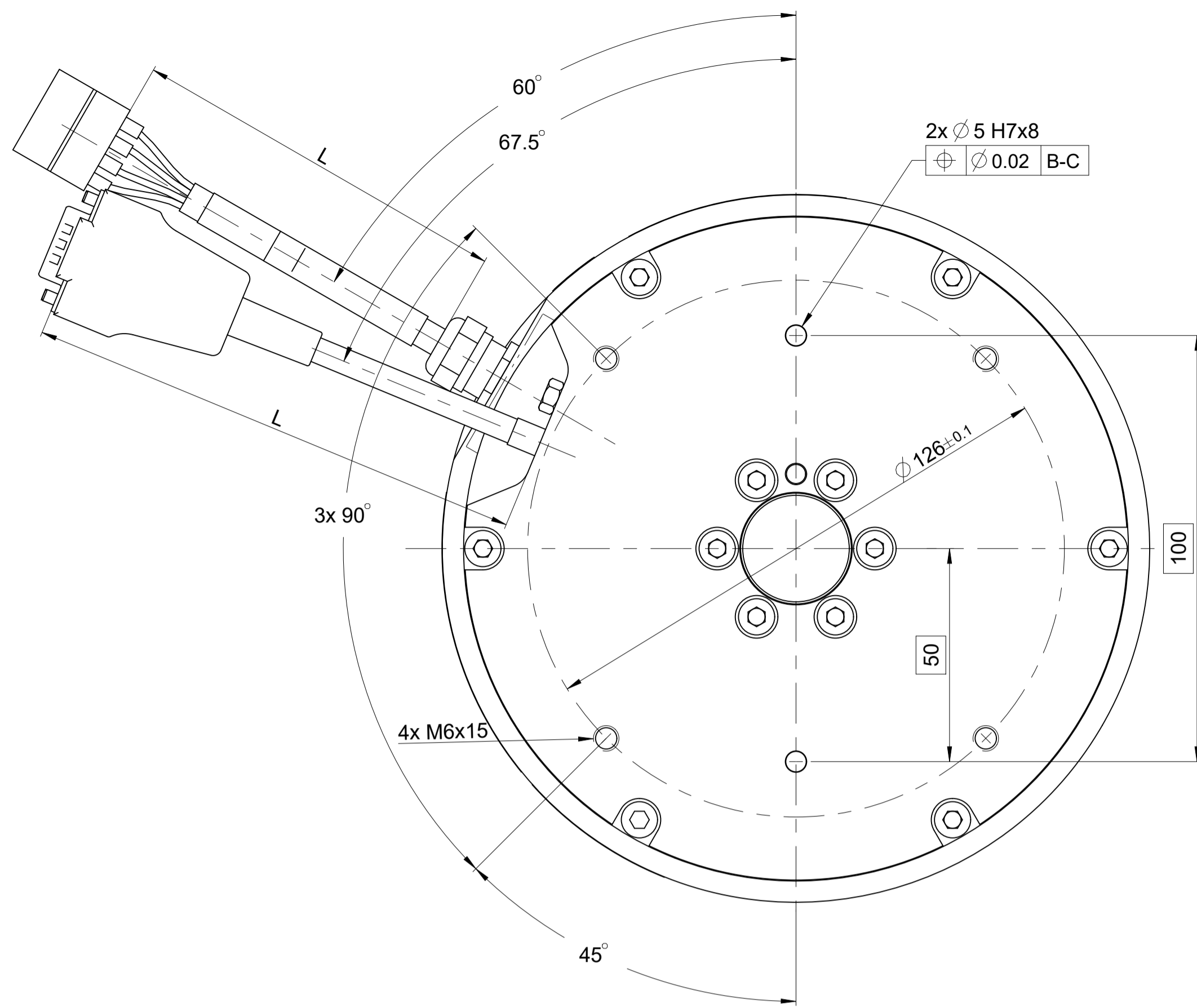
Surface treatment:  
Traitement de surface:

The reproduction, distribution and utilization of this document as well as the communication of its contents to others without express authorization is prohibited. Offenders will be held liable for the payment of damages. All rights reserved in the event of the grant of a patent, utility model or design. (ISO 18015)

ETEL ETEL S.A.  
2112 Möllers  
SWITZERLAND

Version/Revision/Sheet Page  
1271729-01 - A-01 1 of 1

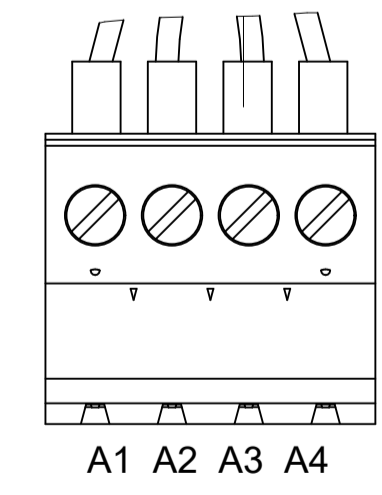
Document number



**Encoder Connector Pinning**

Pin	Function
4	+5V
5, 12	GND
6	COS-
7	SIN-
8	IDX-
13	COS+
14	SIN+
15	IDX+
1, 2, 3, 9, 10, 11	Not Connected

**300V Connector Pinning**



Pin	Wire	Function
A1	Wire 3	Motor Phase 3
A2	Wire 2	Motor phase 2
A3	Wire 1	Motor phase 1
A4	Gr-Ye	Protective Earth

Variant	Part n°	Winding	L	Tol.
ASME-RTMBi1401003RAS0000	1196273-01	3RAS	5000	±100
ASME-RTMBi1401003RBS0000	1196273-02	3RBS	5000	±100

1196273-00 ID number

Change No. C142285-40  
Released: 09.05.2022

ASME-RTMBi1401003\*\*S0000 - Interface  
ASME-RTMBi1401003\*\*S0000 - Interface

Material: Matière:

Original drawing Scale Format  
RoHS 1:1 A1

Dimensions in mm / Cotes en mm

Workplace edges ISO 13715  
Arêtes de formes selon ISO 13715

General tolerances ISO 2768-mK  
Tolérances générales ISO 2768-mK

Surfaces as per ISO 1302  
Etats de surface selon ISO 1302

Tolerances as per ISO 8015 : 2011  
Tolérances selon ISO 8015 : 2011

Surface treatment:  
Traitement de surface:

The reproduction, distribution and utilization of this document as well as the communication of its contents to others without express authorization is prohibited. Offenders will be held liable for the payment of damages. All rights reserved in the event of the grant of a patent, utility model or design. (ISO 18216)

ETEL ETEL S.A.  
2112 Möhlers  
SWITZERLAND

Version/Revision/Sheet Page  
1196505-01 - A-01 1 of 1

Document number